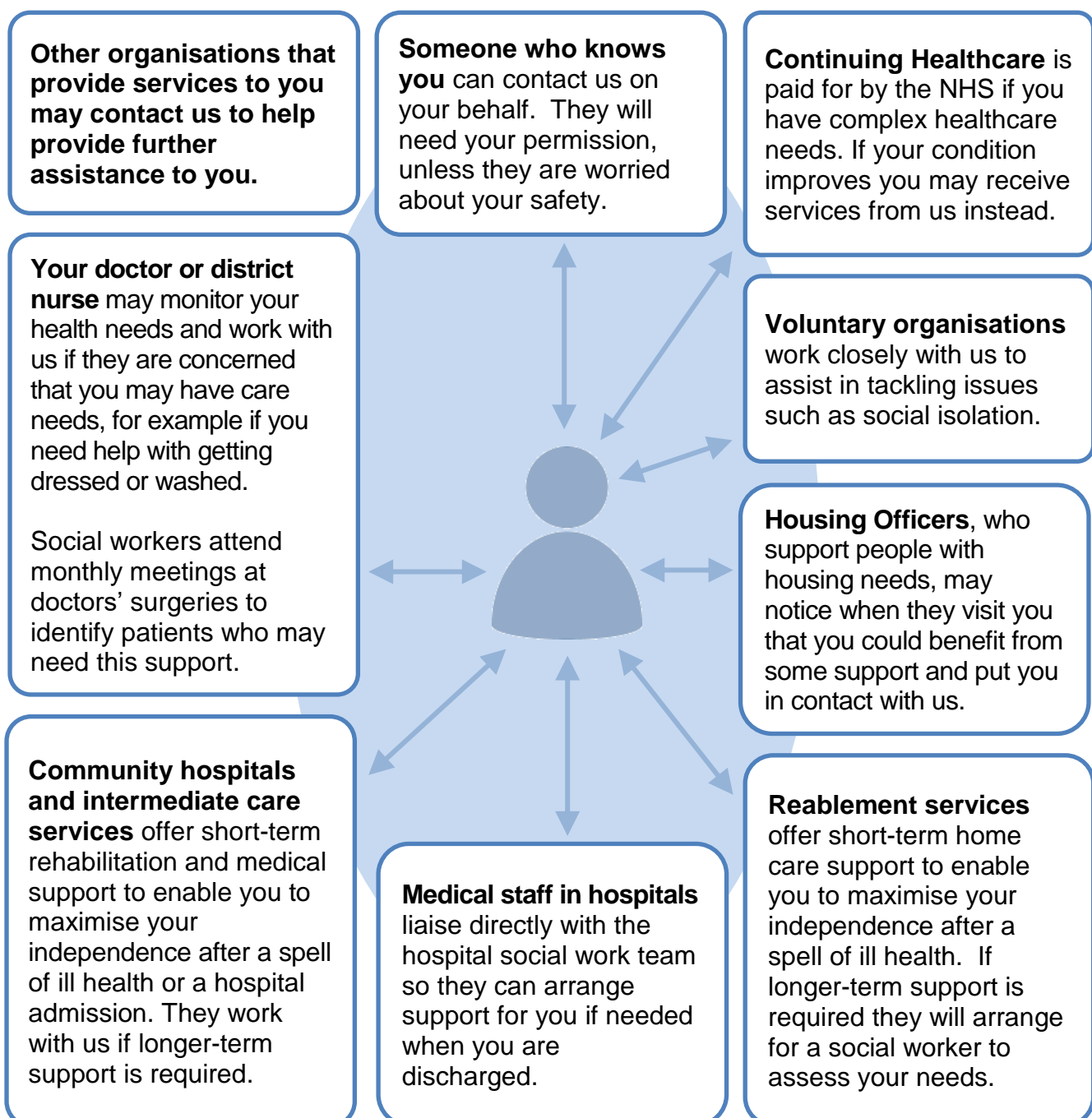


## Organisations we work with

Our role is to enable residents with care and support needs to live independently for as long as possible and to ensure vulnerable adults are safe. All the professionals involved in your care and support will liaise and work together to provide you with the most appropriate care for your situation. As part of a multi-disciplinary team the agencies involved in supporting you change as your needs change. Some agencies we work with are detailed below.



More information and details about our services can be found on our factsheet web page [www.poole.gov.uk/adultsocialcarefactsheets](http://www.poole.gov.uk/adultsocialcarefactsheets).

For more information about services please go to [www.mylifemycare.com](http://www.mylifemycare.com).

**To download a copy of this factsheet:**  
[www.poole.gov.uk/adultsocialcarefactsheets](http://www.poole.gov.uk/adultsocialcarefactsheets)



We can give you help to read or understand this information:

**Bournemouth and Christchurch residents**

Tel. 01202 458744 / email [caredirect@bcpcouncil.gov.uk](mailto:caredirect@bcpcouncil.gov.uk)

Text  
Relay



18001 01202 458744

**Poole residents**

Tel. 01202 633902 / email [sshelpdesk@poole.gov.uk](mailto:sshelpdesk@poole.gov.uk)

Text  
Relay



18001 01202 633902